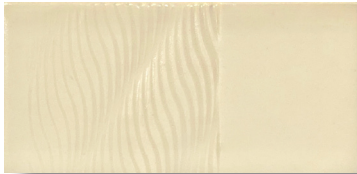


# Satin

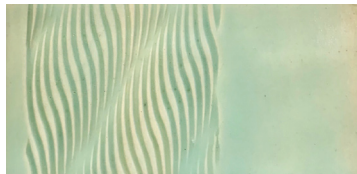
## Cone 5-6 Oxidation Glazes

Our Satin glazes have a rich, soft, glowing surface. Many of these glazes are semi-transparent and work great with Georgies Interactive Pigments. Mix and layer to create new shades and tones. The 'satin' surface creates a great assurance of food safety and durability without the gloss. These Satin glazes are zinc-free. The 4oz containers are perfect for accent work or when you are wanting to test.

	4 oz	Pint	Gallon	3 Gallon		4 oz	Pint	Gallon	3 Gallon
GS402....Translucent.....	\$9.00	\$20.00	\$88.00	\$198.00	GS408....Soft Pink .....	\$9.00	\$20.00	\$88.00	\$198.00
GS403....Ocean Motion .....	\$9.00	\$20.00	\$88.00	\$198.00	GS409....Purple.....	\$9.00	\$20.00	\$110.00	\$220.00
GS404....Speckled Olive.....	\$9.00	\$20.00	\$88.00	\$198.00	GS410 ...White.....	\$9.00	\$20.00	\$88.00	\$198.00
GS405....Rouge Red .....	\$9.00	\$20.00	\$110.00	\$220.00	GS411 ....Grey .....	\$9.00	\$20.00	\$88.00	\$198.00
GS406....Speckled Sienna .....	\$9.00	\$20.00	\$110.00	\$275.00	GS412 ....Black .....	\$9.00	\$20.00	\$110.00	\$242.00
GS407 ....Melon .....	\$9.00	\$20.00	\$88.00	\$198.00	GS413 ....Robin's Egg.....	\$9.00	\$20.00	\$88.00	\$198.00



GS402 • Translucent



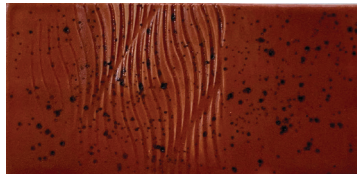
GS403 • Ocean Motion



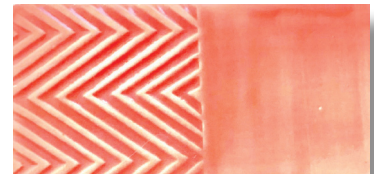
GS404 • Speckled Olive



GS405 • Rouge Red



GS406 • Speckled Sienna



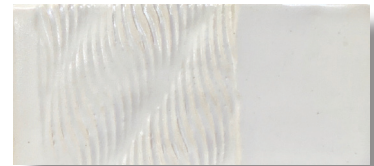
GS407 • Melon



GS408 • Soft Pink



GS409 • Purple



GS410 • White



GS411 • Grey



GS412 • Black



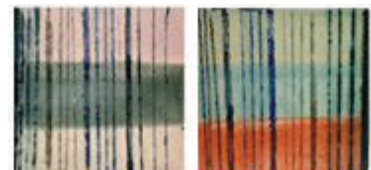
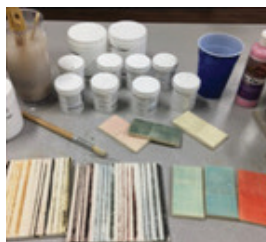
GS413 • Robin's Egg

Our 4oz containers are perfect for testing. There are 12 colors in our kit, so you can test a wide range of fun combinations, like the ones below!

**SATIN GLAZE KIT**

**GSK1 • \$59.40 (retail \$108.00)**

4oz each of 12 colors





# Satin

## Cone 5-6 Oxidation Glazes

### **GS402 Translucent**

Soft semi-transparent glaze. On a white body you will appreciate the soft finish. If you are looking for a soft finish with underglazes and design work, this translucent will allow your color work to show through. Zinc-Free!

### **GS403 Ocean Motion**

A rich, warm celadon-green, semi-transparent glaze.

### **GS404 Speckled Olive**

Soft, semi-transparent olive green with small to medium black flecks that are woven throughout the glaze.

### **GS405 Rouge Red**

Warm, saturated rosey red. The saturated nature of this glaze creates a semi-opaque glaze. So Cheerful!

### **GS406 Speckled Sienna**

Warm, rich mahogany brown. Opaque with small to medium size black spots.

### **GS407 Melon**

Soft, semi-transparent "peachy-cantalope" color. It's a fun color to work into your palette.

### **GS408 Soft Pink**

That perfect baby powder pink, soft in color and touch. Semi-transparent, so if you are looking for a soft color rather than just a clear to go over the top of your designs - give this a try!

### **GS409 Purple**

Semi-opaque royal purple. Color will break on edges. Really true purple for all you purple lovers out there.

### **GS410 White**

Opaque, soft and very white. Works well if you want a soft white. Great as a decorative base for color work and brushwork.

### **GS411 Grey**

Soft grey-green, semi-transparent ... right on trend. A great neutral to use as a contrast with pops of color.

### **GS412 Black**

Our favorite new black! Rich, smooth, great with many of our glazes in all of our glaze lines.

### **GS413 Robin's Egg**

Aptly named - it's the color of that harbinger of Spring - a Robin's egg. Fresh and clean, semi-transparent.

*GEORGIES CERAMIC & CLAY CO. • WWW.GEORGIES.COM*

756 NE LOMBARD ST • PORTLAND OR 97211 • 503-283-1353 ~AND~ 1471 RAILROAD BLVD #9 • EGUENE OR 97402 • 541-338-7654